



TURNER UNI-DRIVE

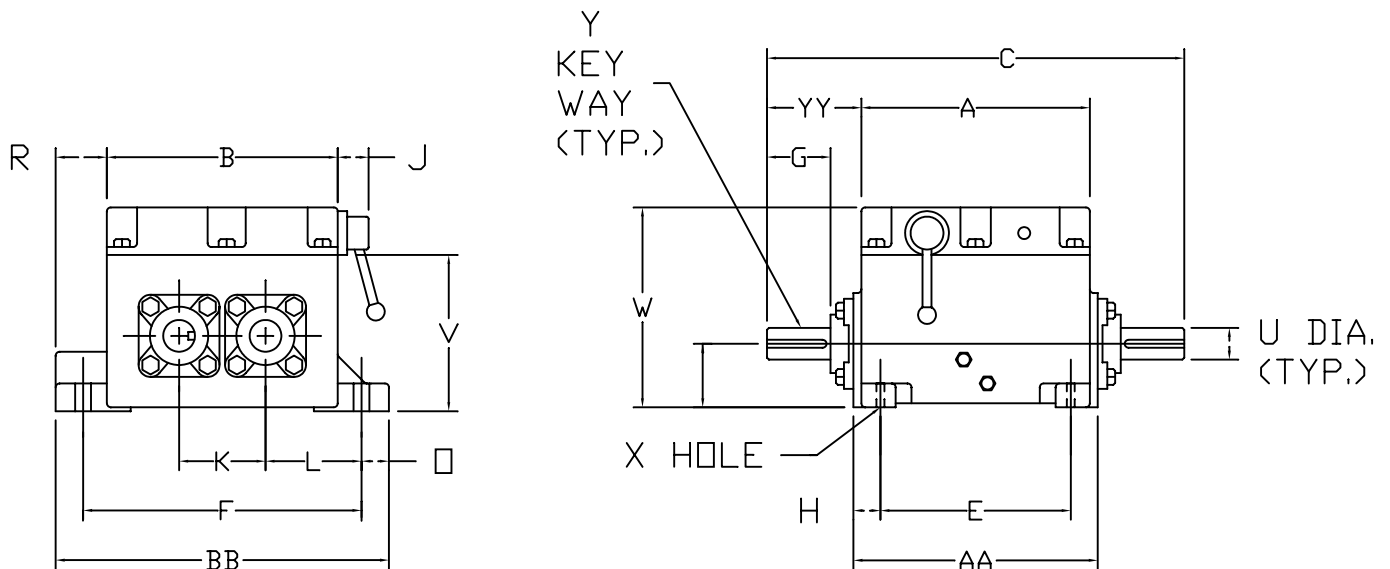
32M - MANUAL SHIFT
32A - AUTOMATIC SHIFT

Ratio range 1.00 - 2.00 : 1
Torque Capacity - 5430 in-lbs (Manual)
3000 in-lbs (Automatic)

2 or 3 speeds with manual shift
2 speeds with automatic shift
Off-the-shelf components for all ratios
Available with reversing ratios

Approx. Weight 350 lbs

DIMENSIONS



Hinged Motor Plate and Mounting Base available as Optional Accessories.
Contact TURNER UNI-DRIVE for Dimensions.

A	B	C	D	E	F	G	H	J	K	L
21 1/4	14 3/8	33 1/2	4.750	16 3/4	17 1/8	5	2 1/4	2 1/8	5.000	6 1/16

□	R	U	V	W	X	Y
1 1/8	2 1/2	2.250	9 11/16	13 5/16	7/8 DIA	1/2 X 1/4 X 4 1/2

AA	BB	YY
21 1/4	19 3/8	6 1/8

DIMENSIONS ARE IN INCHES AND ARE NOT TO BE USED FOR CONSTRUCTION UNLESS CERTIFIED