



TURNER UNI-DRIVE

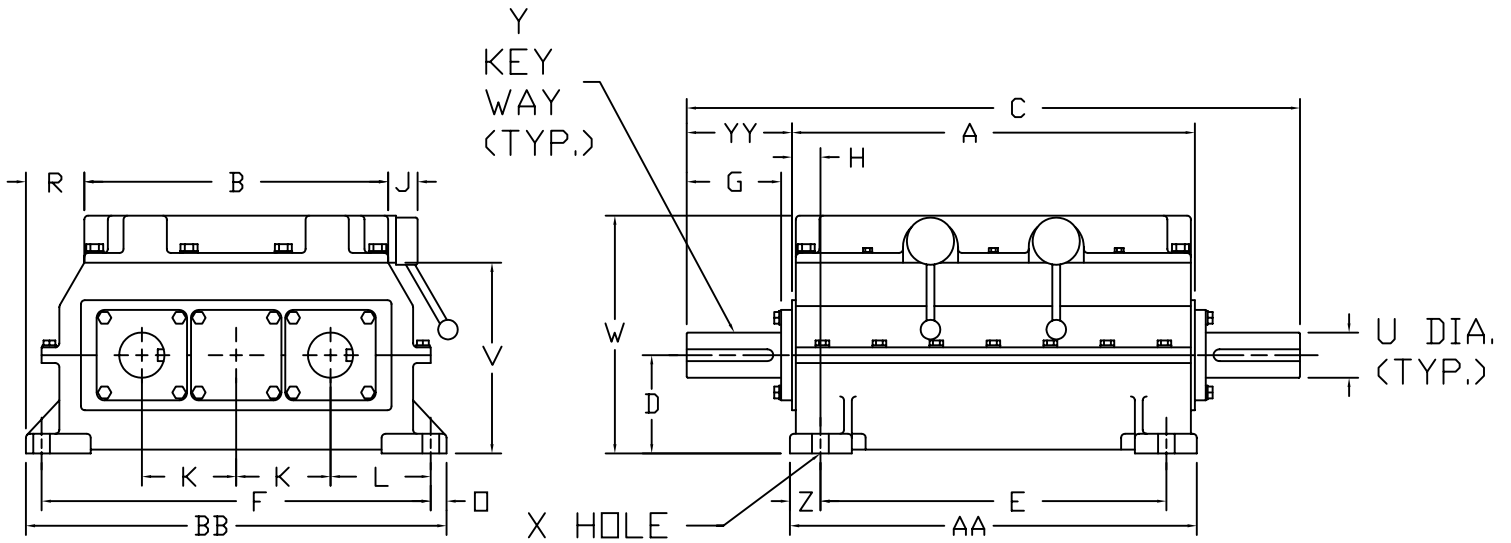
60M - MANUAL SHIFT

Ratio range 1.00 - 4.00 : 1
Torque Capacity - 14,200 in-lbs (Manual)

2 or 3 speeds with manual shift
Off-the-shelf components for all ratios

Approx. Weight 860 lbs

DIMENSIONS



Hinged Motor Plate and Mounting Base available as Optional Accessories.
Contact TURNER UNI-DRIVE for Dimensions.

A	B	C	D	E	F	G	H	J	K	L
25 5/8	19 21/64	39	6.250	22	24 3/4	6	1 13/16	1 7/8	6.000	6 3/8

□	R	U	V	W	X	Y	Z
1	3 23/32	2,875	12 1/8	15 1/8	11/16 DIA	3/4 X 3/8 X 5 1/2	2

AA	BB	YY
26	26 3/4	6 11/16

DIMENSIONS ARE IN INCHES AND ARE NOT TO BE USED FOR CONSTRUCTION UNLESS CERTIFIED